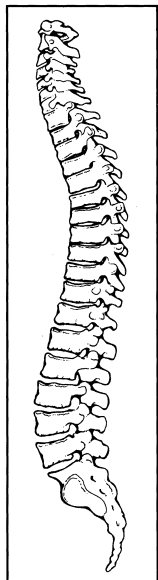


SPINE

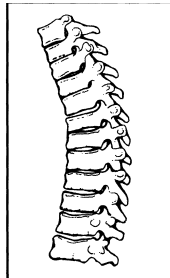
BONE: SPINE (5)



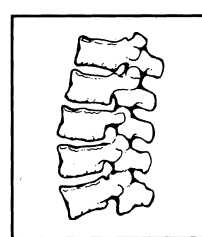
Location: Cervical (51)



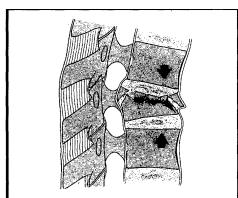
Location: Thoracic (52)



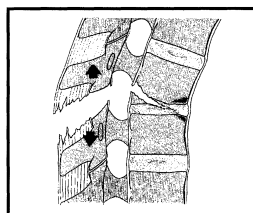
Location: Lumbar (53)



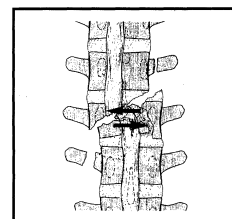
Types:
A. Compression injuries of the body
(compressive forces) (5_-A)



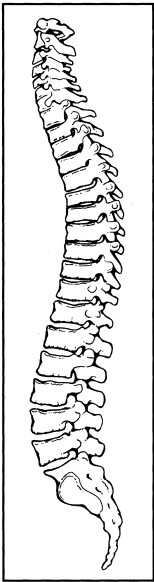
B. Distraction injuries of the anterior
and posterior elements (tensile forces)
(5_-B)



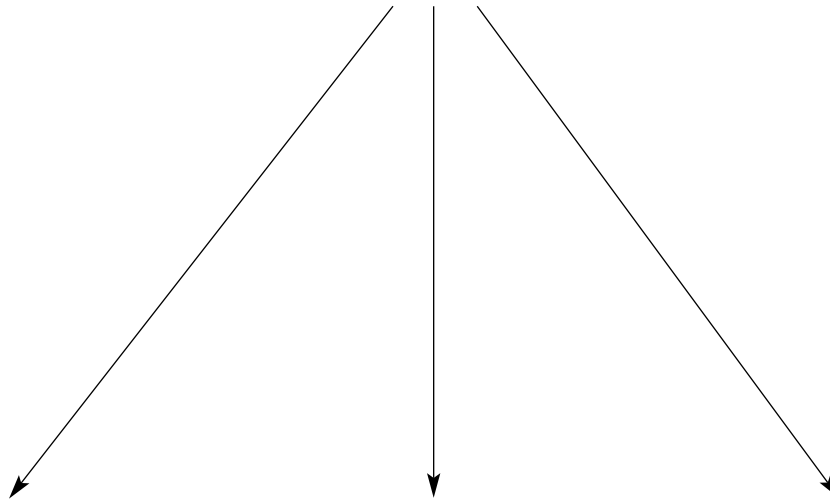
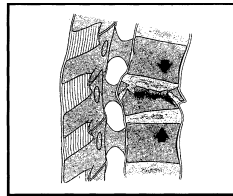
C. Multidirectional injuries
with translation affecting the
anterior and posterior ele-
ments (axial torque causing
rotation injuries) (5_-C)



BONE: SPINE (5)



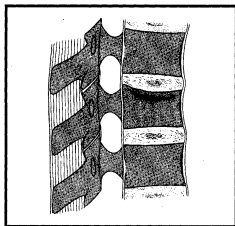
Types:
A. Compression injuries of the body
(compressive forces) (5_-A)



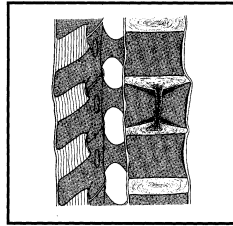
Groups:

Vertebral body compression type (5_-A)

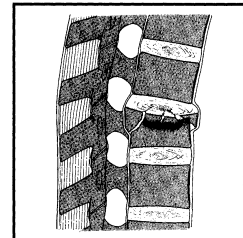
1. Impaction fractures (5_-A1)



2. Split fractures (5_-A2)



3. Burst fractures (5_-A3)



Subgroups and Qualifications:

Vertebral body compression fractures, impaction injury (5_-A1)

1. End plate impaction (5_-A1.1)
2. Wedge impaction (5_-A1.2)
3. Vertebral body collapse (5_-A1.3)

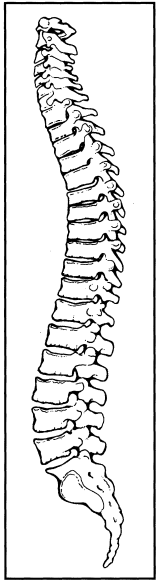
Vertebral body compression fractures, split (5_-A2)

1. Sagittal (5_-A2.1)
2. Coronal (5_-A2.2)
3. Pincer (5_-A2.3)

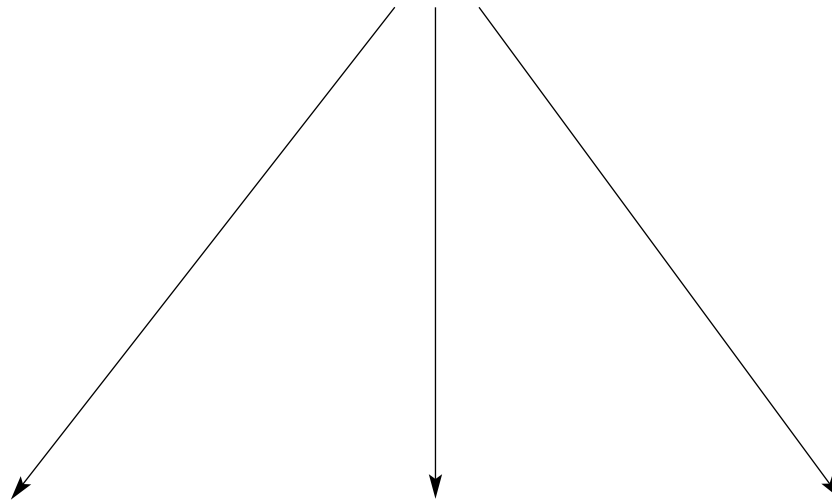
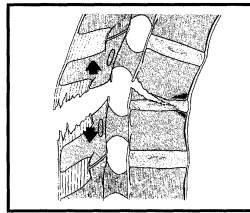
Vertebral body compression burst fractures (5_-A3)

1. Incomplete burst (5_-A3.1)
2. Burst-split (5_-A3.2)
3. Complete burst (5_-A3.3)

BONE: SPINE (5)



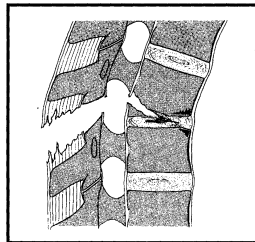
B. Distraction injuries of the anterior and posterior elements (tensile forces) (5_-B)



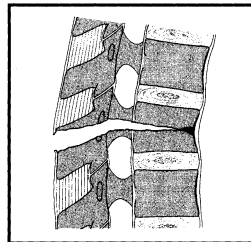
Groups:

Anterior or posterior element injury with distraction (5_-B)

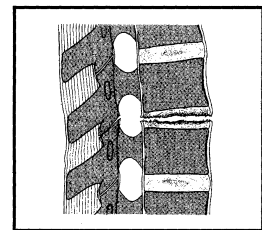
1. Posterior disruption predominantly ligamentous (flexion-distraction injury) (5_-B1)



2. Posterior disruption predominantly osseous (flexion-distraction injury) (5_-B2)



3. Anterior disruption through the disc (hyperextension-shear injury) (5_-B3)



Subgroups and Qualifications:

Posterior disruption ligamentous (5_-B1)

1. With transverse disruption of the disc (5_-B1.1)
2. Vertebral body compression fracture (5_-B1.2)

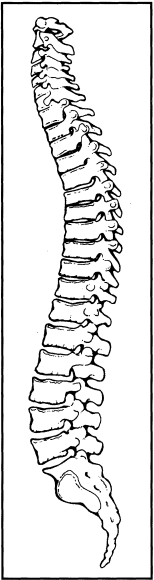
Posterior disruption osseous (5_-B2)

1. Transverse bicolonn fracture (5_-B2.1)
2. With transverse disruption of the disc (5_-B2.2)
3. With vertebral body compression (5_-B2.3)

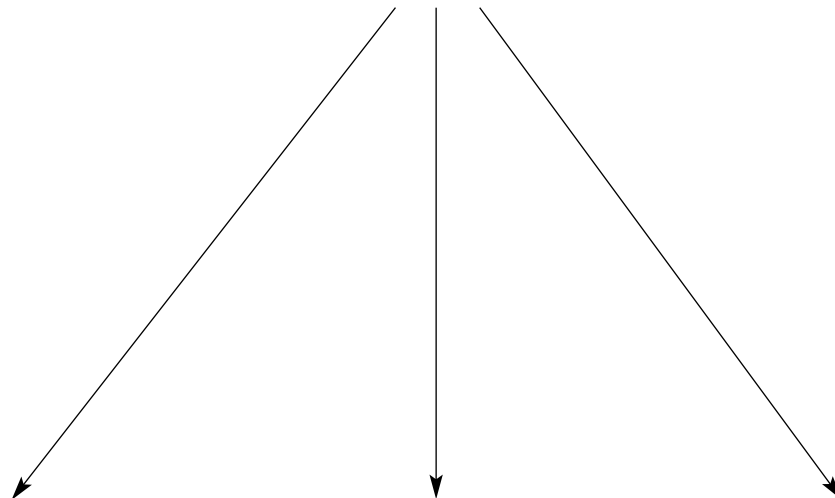
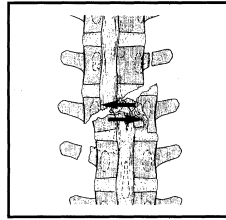
Anterior disruption through the disc (5_-B3)

1. Hyperextension-subluxation (5_-B3.1)
2. Hyperextension-spondylolysis (5_-B3.2)
3. Posterior dislocation (5_-B3.3)

BONE: SPINE (5)



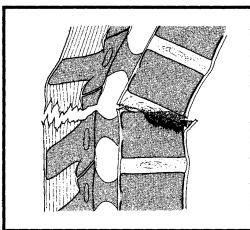
C. Multidirectional injuries with translation affecting the anterior and posterior elements (axial torque causing rotation injuries) (5_-C)



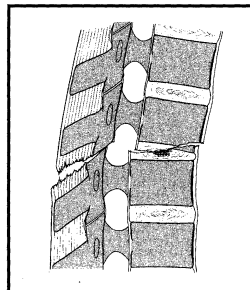
Groups:

Anterior or posterior element injury with rotation (5_-C)

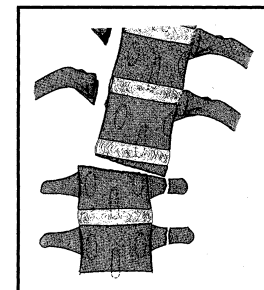
1. Rotational wedge, split, and burst fractures (5_-C1)



2. Flexion subluxation with rotation (5_-C2)



3. Rotational shear injuries (Holdsworth slice rotation fracture) (5_-C3)



Subgroups and Qualifications:

Rotational wedge, split and burst fractures (5_-C1)

- 1. Rotational wedge fractures (5_-C1.1)
- 2. Rotational split fractures (5_-C1.2)
- 3. Rotational burst fractures (5_-C1.3)

Flexion subluxation with rotation (5_-C2)

- 1. Flexion-distraction injuries with rotation (5_-C2.1)
- 2. B2 with rotation (5_-C2.2)
- 3. Hyperextension-shear-rotation of spine (5_-C2.3)

Rotational shear injuries (5_-C3)

- 1. Slice (5_-C3.1)
- 2. Oblique (5_-C3.2)